

# BROWN FIELD WALL OF PRIDE

Please PRINT how your brick will be worded (2 or 3 lines, 20 spaces per line limit)


6" x 12" Brick on inside wall going north toward bleachers \$85.00

12" x 16" Stone on Piers going north toward bleachers \$350.00

12"X16" Stone on Piers going east from ticket booth facing field \$350.00

12" x 24" Stone on top row of family wall going north towards bleachers \$500.00

12" x24" Stone on north side of angled wall of main entrance \$500.00

12"X16" Stone on Piers going east from ticket booth facing street \$700.00

16" x 24" Stone on south side of ticket booth \$1500.00

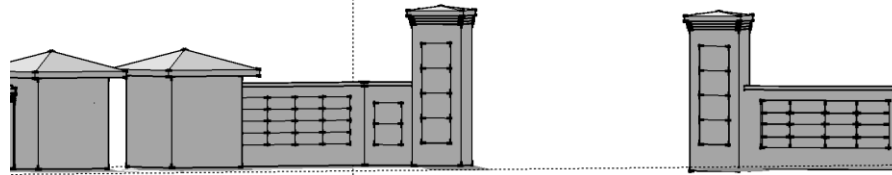
2' 8" x 2' 4" Stone on north side of large piers at main entrance \$1500.00

All proceeds go towards improvements at Brown Field and other athletic facilities.

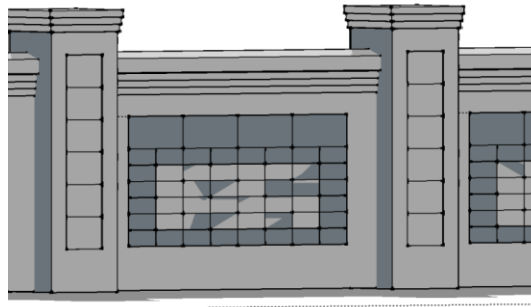
Make payment to: Booster Club -FB Wall

Send to:  
West Delaware Schools  
C/O Doug Winkowitsch  
701 New Street  
Manchester, IA 52057

**MAIN ENTRANCE FACING NORTH**



**FAMILY WALL FACING EAST GOING  
NORTH TOWARDS BLEACHERS**



**PIERS ON STREET**

